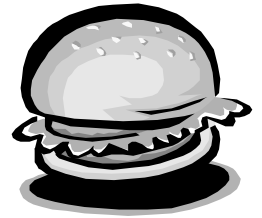




# Diary of an Eaten Hamburger!



## UPPER PRIMARY

### Interpreting Information.

Read the following information carefully and answer the questions below.

**12:00 Noon.** Here I am, a freshly-made hamburger with onions, salad and lots of oozing sauce!

**12:01.** Grabbed by a pair of hands, I'm suddenly torn in two by hard, white teeth. Ouch! I'm being pushed around a dark, wet cave by a large, rubbery paddle called a tongue.

**12:02.** It's dark in here! I think I'm going over a cliff...HEELLPP!! I'm falling down the oesophagus. I've landed in a giant sack - what a torture chamber! I'm being attacked by enzymes - chemicals that break down food into simple substances that pass into the blood stream. Now I'm just a thick liquid where I was once a beautiful hamburger.

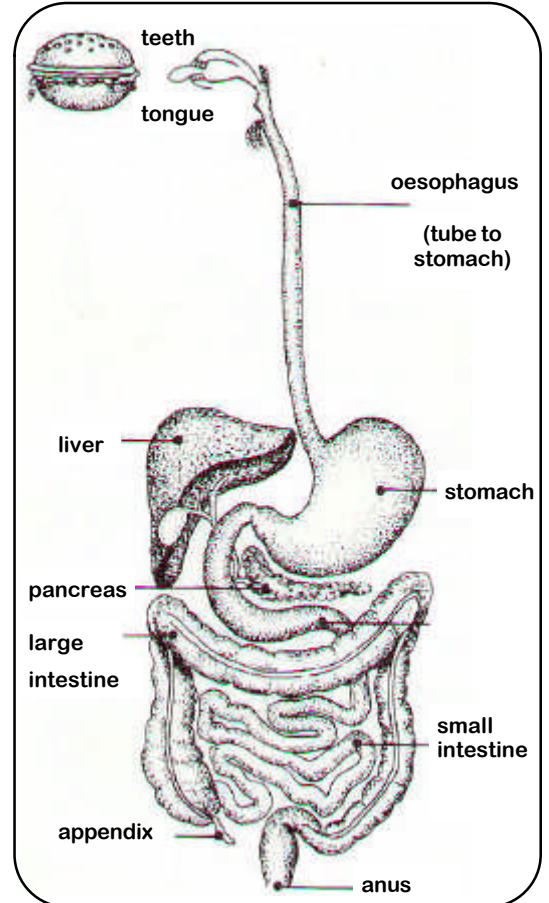
**1.30.** The liver is pouring bile on me! Bile is a yellow liquid which dissolves fat! Not a pleasant experience...

**1.45.** Uh-oh, the stomach muscles are tensing. Here I go again! I'm being squirted into a long, winding tube called the small intestine, although it's not small - over 7 metres if you spread it all out.

**3.00.** I'm being hit with digestive juices as I'm being pushed along the small intestine. I wonder if people on the outside can hear all this rumbling?

**4.30.** Now all the useful parts of the food have left, gradually being absorbed into the blood stream. Off they go to pay a visit to the liver to be turned into energy.

**7.00.** As for me, well there's not much left now, only waste matter actually. We're approaching the large intestine. I must say, the company is not up to much - all the dregs and dropouts are here with me! Bacteria attack us to break us down and a lot of gas is produced. Soon we will be evacuated through the rectum and flushed down the toilet. The end of quite an adventurous journey!



Adapted from: Health Education: Mind & Body (1985) pp 99-101

1. Circle all the verbs (action words) and highlight the adjectives (describing words).
2. What is bile? \_\_\_\_\_
3. What was the 'giant sack'? \_\_\_\_\_
4. What is the tube to the stomach called? \_\_\_\_\_
5. How long would the small intestine be if spread out? \_\_\_\_\_
6. What happens to all the useful parts of food? \_\_\_\_\_
7. Rearrange these digestive organs in the correct order of food processing:  
pancreas, small intestine, anus, oesophagus, teeth, liver, stomach, tongue, large intestine.

## Body System Quiz.

Match these body systems with the correct definitions.

- The \_\_\_\_\_ system enables us to move.
- The \_\_\_\_\_ system processes food and drinks.
- The \_\_\_\_\_ system enables us to think, feel and control our actions.
- The \_\_\_\_\_ system enables us to breathe.
- The \_\_\_\_\_ system carries nutrients and oxygen to all body parts, and carries away waste products.

- digestive
- respiratory
- cardiovascular
- muscular-skeletal
- nervous

**Add-An-Adverb.** An adverb is a word that describes a verb, that is, how you do something (for example 'He spoke loudly'). Write the adverbs in these sentences and come up with a synonym for that word.

- Food is pushed slowly along the small intestine.  
 You should chew your food thoroughly.  
 The heart continuously pumps blood around the body.  
 Blood is carried away from the heart by the arteries.  
 The muscular-skeletal system keeps us from falling over.

ADVERB	SYNONYM



## Magic Squares.

Complete these magic squares.

		4
16		8

Each row total is 30

		4½
5		

Each row total is 9

7		
		16

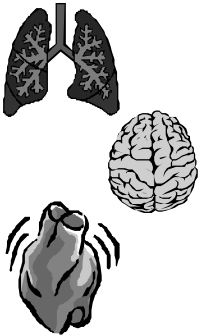
Each row total is 57

**Work It Out!**

1.  $5^3 =$  \_\_\_\_\_
2.  $4.1 + 1.04 =$  \_\_\_\_\_
3.  $4/6$  of 48 = \_\_\_\_\_
4.  $3/7$  of 63 = \_\_\_\_\_
5. XIII = \_\_\_\_\_
6. XXIV = \_\_\_\_\_
7.  $1 - 7/12 =$  \_\_\_\_\_
8.  $2 - 4/5 =$  \_\_\_\_\_
9. 36, 49, \_\_\_\_\_, 81
10.  $86 \div 4 =$  \_\_\_\_\_  $\div 2$

## Internal Affairs

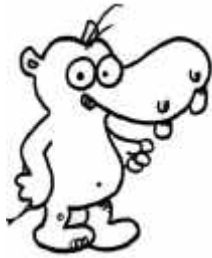
Research and illustrate an accurate picture of your internal organs. Include labels for all the major parts. Hint – use the diagram of the digestive system on page one for ideas but don't forget other essential organs! (See your teacher if you need help with this).



## Eugene's Challenge.

Find out and write about what these body parts do.

- brain
- nostrachea
- oesophagus
- heart
- lungs
- kidneys
- liver
- stomach
- small intestine
- large intestine
- skin



Parent Signature: \_\_\_\_\_